

## Direct Link from the Velleman PC Oscilloscopes to Microsoft Excel

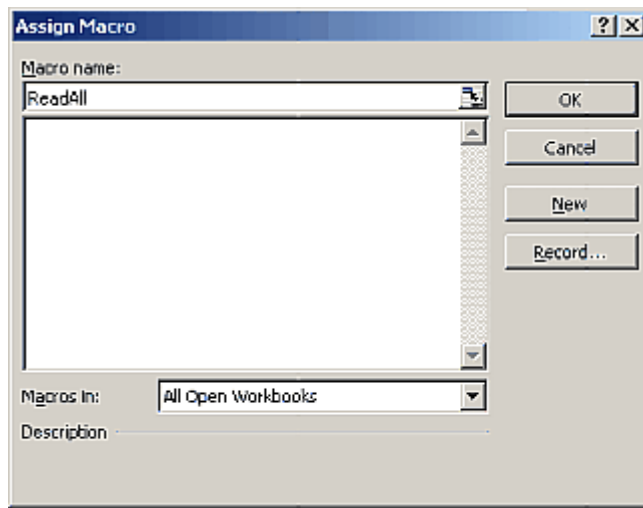
Pc-Lab2000 software package includes a DLL (Dynamic Link Library) *DSOLink.DLL*, installed to Windows' *SYSTEM32* folder.

This DLL allows you to write custom applications in Excel, Visual Basic, Delphi or any other 32-bit Windows application development tool that supports calls to a DLL.

### Transferring Waveform Data to an Excel Spreadsheet

The example Excel macro shows you how to collect data directly into the spreadsheet from the Velleman PC oscilloscopes without the need for other software.

1. Open **Microsoft Excel** and start a new workbook document.
2. Select the **View / Toolbars** Menu and Select **Forms**.
  - The Forms toolbar appears.
3. Create a **Button**
  - In the Forms toolbar click on the "Button" button: the mouse-pointer will become a small cross.
  - On Excel worksheet, use the mouse to draw a rectangle to mark where you want your button to appear.
  - When you release the mouse after drawing the rectangle the "Assign Macro" dialog-box will appear.

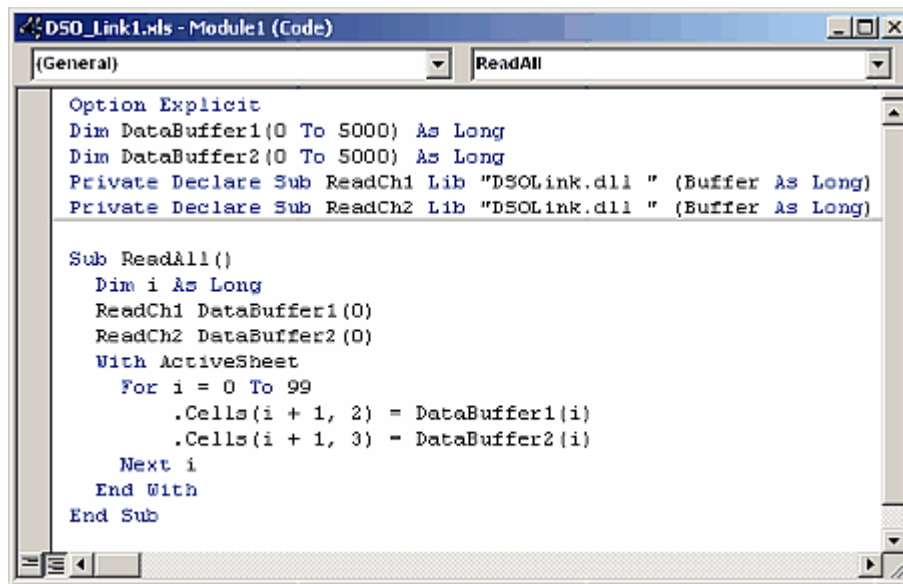


4. Type Macro name: **ReadAll** and click **New** button.
  - Microsoft Visual Basic edit window will open. A subroutine called *ReadAll* has been created.
5. Substitute the default text:

```
Sub ReadAll()  
End Sub
```

with the following text in the edit window:  
(Use Copy and Paste.)

```
Option Explicit  
Dim DataBuffer1(0 To 5000) As Long  
Dim DataBuffer2(0 To 5000) As Long  
Private Declare Sub ReadCh1 Lib "DSOLink.dll " (Buffer As Long)  
Private Declare Sub ReadCh2 Lib "DSOLink.dll " (Buffer As Long)  
  
Sub ReadAll()  
    Dim i As Long  
    ReadCh1 DataBuffer1(0)  
    ReadCh2 DataBuffer2(0)  
    With ActiveSheet  
        For i = 0 To 99  
            .Cells(i + 1, 2) = DataBuffer1(i)  
            .Cells(i + 1, 3) = DataBuffer2(i)  
        Next i  
    End With  
End Sub
```



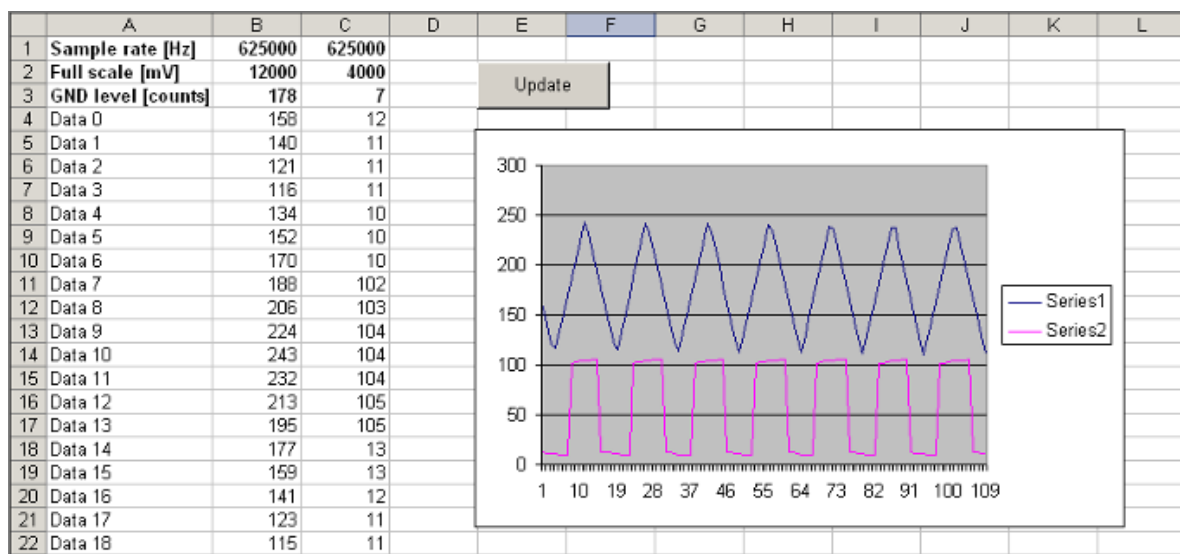
6. Press **Alt+F11** to return to Excel.
7. Type following texts to column **A**:

Sample rate [Hz]
Full scale [mV]
GND level [counts]
Data 0
Data 1
Data 2
...

8. Start oscilloscope program for PCS500, PCS100 or K8031 and click **Run** or **Single** button.
9. Click the button on the Excel worksheet. The created macro will execute and the data described in column **A** will appear to the worksheet columns **B** and **C**.
  - Rows 4...4099 contain the acquired data in A/D converter counts (0...255) for PCS500.
  - Rows 4...4083 contain the acquired data in A/D converter counts (0...255) for PCS100 and K8031.
  - The triggering point of PCS500 is on row 1030 and of PCS100 and K8031 on row 4.

The three first rows contain the scope settings and the rest of the rows contain the raw oscilloscope data in A/D converter counts (0...255).

Using the **Sample rate**, **Full scale** and **GND level** values it is possible to reconstruct the waveform data into engineering units (e.g. Volts and seconds) for further analysis.



## Data acquisition to other applications

The DSOLink.DLL gives you direct access to real-time data and settings information from the oscilloscope to custom applications in Visual Basic, Delphi or any other 32-bit Windows application development tool that supports calls to a DLL..

### Description of the procedures of the DSOLink.DLL

**ReadCh1**

**ReadCh2**

#### Syntax

```
PROCEDURE ReadCh1(Buffer: Pointer);
```

```
PROCEDURE ReadCh2(Buffer: Pointer);
```

#### Parameter

**Buffer:** A pointer to the data array of 5000 long integers where the data will be read.

#### Description

Read all the data and the settings of channel 1 or channel 2 of the PCS500, PCS100 or K8031.

As a return the following data is put to the buffer:

[0] : Sample rate in Hz

[1] : Full scale voltage in mV

[2] : Ground level in A/D converter counts. The value may be beyond the 0...255 range if GND level is adjusted beyond the waveform display area.

[3...4098] : The acquired data in A/D converter counts (0...255), from PCS500.

[3...4082] : The acquired data in A/D converter counts (0...255), from PCS100 and K8031.

The triggering point of the PCS500 is at the data location [1027] and of the PCS100 and K8031 at the location [3].

#### Example (in Delphi)

```
var
  data: array[0..5000] of longint;

procedure ReadCh1(Buffer: Pointer); stdcall; external 'DSOLink.dll';

procedure TForm1.Button1Click(Sender: TObject);
var i: longint;
p:pointer;
begin
  p:= @data[0];
  ReadCh1(p);
```

```

memol.clear;
memol.lines.add('Sample rate [Hz]'+chr(9)+inttostr(data[0]));
memol.lines.add('Full scale [mV]'+chr(9)+inttostr(data[1]));
memol.lines.add('GND level [counts]'+chr(9)+inttostr(data[2]));
memol.lines.add('');
begin
  for i:=0 to 20 do
    memol.lines.add('Data ('+inttostr(i)+' )'+chr(9)+chr(9)+inttostr(data[i+3]));
  end;
end;

```

### Example (in Visual Basic)

#### Option Explicit

```

Dim DataBuffer(0 To 5000) As Long
Private Declare Sub ReadCh1 Lib "DSOLink.dll" (Buffer As Long)

'This reads the settingsd and 4096 bytes of data from CH1 to the data buffer.
'The first 21 values are displayed.

Private Sub Read_CH1_Click(Index As Integer)
  Dim i As Long
  List1.Clear
  ReadCh1 DataBuffer(0)
  List1.AddItem "Sample rate [Hz]" + Chr(9) + Str(DataBuffer(0))
  List1.AddItem "Full scale [mV]" + Chr(9) + Str(DataBuffer(1))
  List1.AddItem "GND level [counts]" + Chr(9) + Str(DataBuffer(2))
  List1.AddItem ""
  For i = 0 To 20
    List1.AddItem "Data(" + Str(i) + ") " + Chr(9) + Chr(9) + Str(DataBuffer(i + 3))
  Next
End Sub

```

The complete example programs in Delphi and Visual Basic are located on the Velleman CD. Those may be used as a starting point how to construct your customized application programs.

### Running the DSOLink Demo under Visual Basic

Make sure that the file *DSOLink.DLL* is copied to Windows' *SYSTEM32* folder.

Check the **IPC-Lab2000 tools\** folder on the Velleman CD to locate the ***DSOLink\_Demo\_VB.ZIP*** file.

This file contains a ready to run *DSOLink\_Demo.EXE* program and its source code.

You may unzip the files to any folder and use Visual Basic to examine, edit and compile the files.

### Running the DSOLink Demo under Delphi

Check the **IPC-Lab2000 tools\** folder on the Velleman CD to locate the ***DSOLink\_Demo\_Delphi.ZIP*** file.

This file contains a ready to run *DSOLink\_Demo.EXE* program and its source code.

You may unzip the files to any folder and use Delphi to examine, edit and compile the files.

**Note:** The oscilloscope software must be running and "Run" or "Single" button pressed and trace

displayed on the oscilloscope screen.

